



PENN
TOWNSHIP
LANCASTER COUNTY, PA



Township News

Winter 2019/20 Edition

97 N. PENRYN ROAD MANHEIM, PA 17545

717-665-4508 (p) ♦ 717-665-4105 (f)

www.pennnwplanco.org

TOWNSHIP OFFICE WINTER CLOSINGS

Nov 28 & 29: Thanksgiving
December 24 & 25: Christmas
Dec 31 & Jan 1: New Year's
Jan 20: Martin Luther King Jr.
Feb 17: President's Day

Penn Township Offices

Hours: Mon-Thurs...7am-5:30pm
Municipal Office 665-4508
Water & Sewer Billing.... 665-4508
Building/Zoning..... 665-4508
Sewage Enforcement 989-8439
Police Department 733-0965

IN THIS EDITION

2019 Accomplishments	7
2020 Budget Update.....	6
Active Development Plans.....	6
Christmas Tree Recycling.....	4
Do you have your REAL ID?.....	4
Lititz ROCrec.....	5
Low water pressure?.....	6
Manheim Community Library.....	5
Northwest EMS Toys for Tots.....	1
Places2040.....	6
Recycle Right.....	3
United States Census 2020	7
What happens to trash?.....	2-3
Winter Holiday Safety.....	8
Winter Storm Safety & Tips.....	7
Winter Stormwater Pollution Prevention.....	4

Northwest EMS kicks off 2019 Toys For Tots Collection

Toy collection will run November 1-December 11, 2019

Donate toys to this year's Northwest EMS Toys for Tots event by bringing NEW, UNWRAPPED toys to any of the following locations:

Northwest EMS-Manheim
Northwest EMS-Elizabethtown
East Donegal Township
Brickerville Fire Company BINGO hall (Tuesday evenings only)
Esbensshade's Garden Centers
Manheim Santa Run (Registration office or First Aid area)
Prussian Street Arcade-Manheim
Pleasant View Retirement Community
Masonic Villages Farm Market
Manheim Community Library
Elizabethtown Library
Two Cousin's-Manheim
Fairview Golf Club Pro Shop
Zion Evangelical Lutheran Church-Marietta
Manheim Community Tree Lighting

For more information, contact Lori Shenk, Community Outreach Manager at lschenk@nwems86.org.



What happens to the trash after it leaves my property?

Lancaster County is very fortunate to have state-of-the-art facilities to handle not only trash, but anything from recyclables like cardboard, glass, aluminum cans and plastic bottles with a neck to hazardous waste like old TV's, paint, chemicals, fuel and fire extinguishers.

A number of things can be taken to the Lancaster County Solid Waste Management Authority's (LCSWMA) Household Hazardous Waste Facility for **FREE**. They are:

- Adhesives Automotive fluids (max. 5 gallons per container)
- Batteries, including automotive and household
- Chemistry sets
- Cooking and frying oils (max. 5 gallons per container)
- Fire extinguishers
- Floor and furniture polish
- Household cleaners
- Fuel, including kerosene, gasoline and propane
- Mercury containing items (max of 30 per month), including ballasts, fluorescent bulbs, thermostats and thermometers
- Lawn treatments, including herbicides and pesticides
- Paint, rust inhibitors, stains, turpentine and thinners
- Photographic and pool chemicals



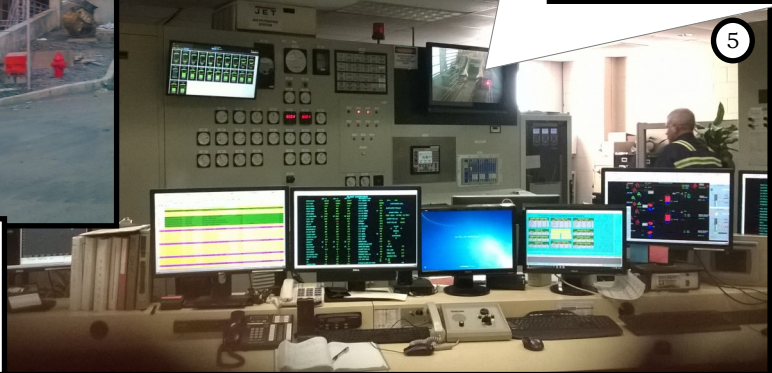
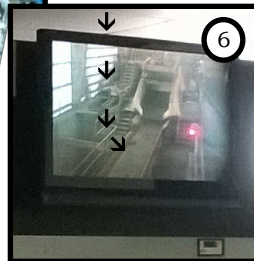
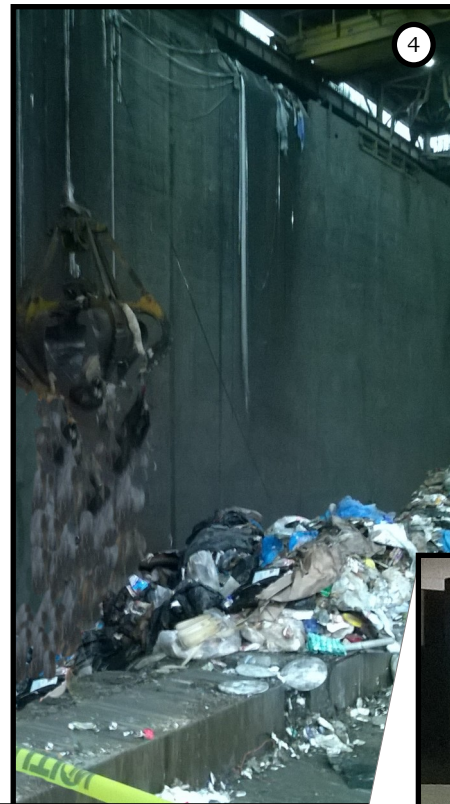
Trash companies and other customers unload their unwanted items into one of three piles at the Transfer Station on Harrisburg Pike. Left-trash; Middle-construction debris; Right-recycling



Above Left-heavy equipment pushes the trash into a LCSWMA truck below; Above Right-a trash truck empties trash onto the tipping floor; Below-a LCSWMA truck driver closes top after being filled from the tipping floor



LCSWMA trucks then bring the trash to the Waste-to-Energy facility where trash is mixed and put into an incinerator (above right). The emissions from this facility are highly monitored by both plant workers and DEP (right).



LCSWMA receives approximately 1,000,000 tons of trash each year. About 44% is recycled, 52% is combusted to create energy and 3.5% goes to landfill.

To save money and to be kind to the environment, LCSWMA's entire fleet runs on compressed natural gas (CNG). CNG is cleaner burning than diesel.

All construction debris goes directly to landfill as it is harmful to burn items such as shingles, treated wood and other like items.

Recyclable items, the Big 4, are taken by private commercial businesses for recycling.

The Waste-to-Energy Facility runs 24hr per day 7 days a week which is fueled entirely by the burning of trash and produces enough energy to power 30,000 homes. Some energy is used by the facility, the remainder goes directly to the power grid. Trash is burned at a minimum temperature of 1800°F and burns at an average temperature of 2000°F. The facility uses effluent from Elizabethtown Borough waste water treatment plant so the water never enters the river. This closed water system is used to cool down ash after the ash is burned (See #6). Steam and processed water are sold to Purdue for their processing of soy beans. For more information, visit <https://www.lcswma.org/facilities/lanaster-waste-to-energy-facility/>.

Think these belong in your recycling bin?



Think again. So how do you know **what to throw**?

FOCUS ON THE BIG 4
RINSE & PUT ONLY THESE ITEMS IN BIN

1	2	3	4
 CORRUGATED CARDBOARD	 PLASTIC BOTTLES & JUGS W/NECKS	 METAL FOOD & BEVERAGE CANS	 GLASS JARS & BOTTLES

It's okay to throw *everything else* away. It will be turned into renewable energy.

RECYCLE RIGHT Lancaster

Visit recyclerightlanaster.org for more tips.



For every 10 trucks of trash coming into the facility, only 1 truck of ash leaves.

That's a 90 % volume reduction in waste going to the landfill. Before ash is taken to the landfill, metals 2 inches or larger are removed and sold to market. The ash is then taken to the landfill where it is used as ground cover. Emissions from the facility are controlled by additives in the combustion process and an array of filters before exiting the building. Emissions from the plant meet or exceed DEP standards.

Before ash is laid as ground cover, it goes to the Metals Recovery Facility located at the Frey Farm Landfill where metals 2 inches and smaller are removed and

sold to market. This facility processes 165,000 tons of ash per year and recovers approximately 22 tons of metal each day.

The Frey Farm Landfill opened in 1989 and is the only facility in PA that has not had a violation in 27 years. Methane gas is collected and turned into clean renewable energy which is enough to power 1,200 homes. Steam and renewable energy are sold to Turkey Hill Dairy for the use at the facility. Ash from the Waste-to-Energy is brought to the landfill where it is used as ground cover. Leachate from the landfill is collected and sent to LASA for processing.



Do you have your REAL ID?

What is REAL ID?

REAL ID is a federal law that affects how states issue driver's licenses and ID cards if they are going to be acceptable for federal purposes, such as boarding a domestic commercial flight, or entering a military installation or federal facility that requires ID.

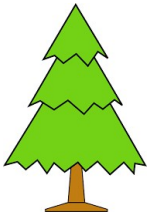


Beginning October 1, 2020, Pennsylvanians will need a REAL ID-compliant license, identification card, or another form of federally-acceptable identification (such as a valid passport or military ID) to:

- Board domestic commercial flights.
- Enter a military base.
- Enter a federal facility that requires ID at the door.

Do I have to get a REAL ID?

No. REAL ID is optional for Pennsylvania residents. You will be able to get either a REAL ID driver's license or identification card, or a standard driver's license or identification card.



Christmas Tree Recycling

Each year, Penn Township residents are encouraged to discard their live Christmas trees in the designated area behind the Township office from December 26 through the end of January. All decorations must be removed and discarded prior to bringing your Christmas tree for recycling.

WINTER STORMWATER POLLUTION PREVENTION TIPS

Start shoveling early! The more snow you remove, the less salt and sand you'll need. Here are some do's and don'ts when shoveling or plowing snow.

DO:

- ✓ Pile snow in locations with the most opportunity to infiltrate into the ground.
- ✓ Pile snow in areas where water does not pond.
- ✓ Clear away any snow that may have been thrown onto the storm drains.

DON'T:

- x Do not pile snow on top of storm drains or near water bodies and wetlands.
- x Do not pile snow onto rain gardens or bioretention areas.

TIPS TO AVOID USING SALT AS A DEICER

More salt does not equal more melting snow. Follow product instructions when spreading deicing material and give it time to work. Sweep up any material remaining after the snow/ice melts.

When temperatures hit 15°F or below, salt is not effective.

Consider using traction materials that contain an acetate, potassium chloride, magnesium chloride, or cracked cornmeal instead of sand or kitty litter.



Pay close attention to places that may have eroded during the snow melt. Plan to improve these areas in the spring by using native grasses, meadow plants, or native trees and shrubs.

Normal snow accumulation does not pose a threat to rain gardens, so there is no need to shovel a rain garden. However, heavy snow loads can weigh down and saturate your garden and hurt plants. Pile snow uphill from the rain garden so when the snow melts the rain garden can do what it is designed to do.



TRAINING
*Personal
Cross
Functional
Performance*

**FITNESS
BOULDERING
OBSTACLES
CLINICS
CLASSES
CAMPS**



**PER MONTH
INDIVIDUAL***
\$39 2020

**Begins January 2020*

lititzrecROC.com
717.874.3281 @ ROCK LITITZ

M C MANHEIM COMMUNITY LIBRARY
L **LEARN. CONNECT. GROW.**

15 East High Street, Manheim, PA 17545
717.665.6700 manheimlibrary.org

HOLIDAY HOURS

CLOSED	CLOSING AT 1 PM
December 25	December 24
January 1	December 31
January 20	
February 17	

For up-to-date program
information, please visit
manheimlibrary.org



SATURDAY, DECEMBER 7 - 10 AM - 4:30 PM
SUNDAY, DECEMBER 8 - NOON - 4:30 PM
HISTORIC MANHEIM TRAIN STATION

**Enjoy the warm, cozy atmosphere cheerfully
decorated to remind us of holidays gone by.**

Visit with Santa. 1930's Manheim miniature
train display of Manheim in the 1930's. Basket
raffle. Locally crafted items and holiday gifts.
Book Nook bargains of gently used Christmas
themed books for all ages. Christmas carols by
the Trust Trio, a strolling a capella trio in period
costumes. Delicious menu at the Cozy Café.

Friends of the Manheim Community Library:
Stop at the hospitality table to pick up your
Stiegel Glassworks membership ornament.

Low water pressure?

If you notice a decrease in public water pressure please first ask a plumber to check your system. We can tell when the public water mains lose pressure. If that happens we will notify you. Sign up for the Swift 911 Emergency Notification System by contacting our office, 717-665-4508.

2020 Budget Update

Township officials have drafted a 2020 budget that is balanced. No tax increases or increases to public water and sewer rates are anticipated. The proposed 2020 budget is expected to be approved by the Board of Supervisors on November 11. A twenty day public review period follows and then the Board is scheduled to hold a hearing on the final 2020 budget on December 9, when it may be adopted.

Active Development Plans

Name	Location	Project	Status
Pleasant View Retirement Community	N. Penryn Road	Two new 18-unit apartment buildings	Conditionally approved, nearing construction
Manheim Imports	Lancaster Road	New car sales lot	Built-out; nearing completion
Pleasant View Retirement Community	N. Penryn Road	New implement building	Under construction
Speedwell Construction	Ditz Drive	Building addition	Built-out; nearing completion
Kreider Farms	Indian Village Road	New alpaca barn	Under construction
Manheim BIC Church	N. Penryn Road	Building addition	Built-out; nearing completion
Manheim Commons	Lancaster Road and Bucknoll Road	192 apartments and 3 commercial buildings	Conditionally approved, pending construction phase
Walnut Run Farms	Elm Road	Dairy farm expansion	Conditionally approved in phases
Sun Hill Commons	West Sun Hill Road	43 single family homes	Construction phase
Cedar Hollow	West Sun Hill Road	75 single family homes	Built-out; nearing completion
Baron's Ridge	White Oak Road	69 single family homes	Under construction
Sweetbriar Creek	Bucknoll Road	200 single family homes	Built-out; nearing completion
Zug Dentistry	Doe Run Road	Commercial alteration	Under construction
IU13 School	Fairland Road	Building expansion	Pending
Hess Subdivision	Fruitville Pike & South Oak Street	Subdivision along Fruitville Pike	Pending approval
Stehman Commercial Project	West End Drive	Warehouse buildings	Pending approval



thinking beyond boundaries

Penn Township Residents....

Please take this survey to provide input on which places2040 policies and tools should be emphasized as we prepare for transportation and other county needs in the coming years.

WE WANT TO HEAR FROM AS MANY LANCASTER COUNTY RESIDENTS AS POSSIBLE!

Visit www.places2040.com/newsurvey to participate!



Census 2020

Pennsylvania Receives Billions in Funding from the Feds Based on Census Numbers

Your response matters.

Health clinics. Fire departments. Schools. Even roads

and highways. The census can shape many different aspects of your community.

- Census results help determine how billions of dollars in federal funding flow into states and communities each year.
- The results determine how many seats in Congress each State gets.
- It's mandated by the U.S. Constitution in Article 1, Section 2: The U.S. has counted its population every 10 years since 1790.

PARTNER WITH US
SPREAD THE WORD
WORK WITH US

For more information, visit 2020census.gov.



United States
Census
2020

2019 Accomplishments

- ✓ Road maintenance projects were completed on: Hostetter Road, Power Road, Memorial Road, Sanctuary Road, Boyer Run Road, Locust Lane and Southview Road
- ✓ Road paving projects were completed on Indian Village Road and Hickory Lane
- ✓ Pipes and/or inlets were installed at or along: North Penryn Road, West Lexington Road/Silver Maple Road, Woodlot Road/Lititz Road, Fairview Road, Dead End Road and Limerock Road
- ✓ Prohibited video gaming terminals
- ✓ Approved four zoning amendments to clarify and ease requirements
- ✓ Two grants totaling \$11,425 were secured and used to replant the Sustainability Park. Township contributed \$643.52 toward the project.
- ✓ 250 trees and 300 live stakes were planted at the Sustainability Park and along the Doe Run tributary at no cost to the Township
- ✓ Improved office and computer security

All within budget.

WINTER STORM SAFETY & TIPS

The Penn Township Public Works Department understands that when the snow flies, life on the roads can be a trying time. We try hard to do the best and quickest job possible to make the roads safe and clear of snow and ice. Cindering usually starts right after the snow begins to fall, with plowing starting around 3" of accumulation. Cindering and plowing routes are set up to clear the more heavily traveled roads first, then secondary roads and development streets. All roads are usually plowed over twice. We make an effort to plow through all of the streets and roads once to get everything at least passable and then the second time to get the snow to the edge of the road or curb. Penn Township is committed to providing excellent snow removal service.

- ◆ Stay back at least 100 ft, when following plow trucks or equipment
- ◆ Turn on headlights
- ◆ For your safety, DO NOT PASS A SNOW PLOW when it is plowing
- ◆ Clear a minimum 3ft area around fire hydrants within 24 hrs
- ◆ A 3ft wide path must be cleared from sidewalks of snow and ice within 24 hrs
- ◆ Snow and ice must not be deposited next to a fire hydrant, on a sidewalk or loading/unloading area
- ◆ Damage to mailboxes, nets, poles or other obstructions within the right-of-way are the property owner's responsibility






PENN
TOWNSHIP


LANCASTER COUNTY, PA

97 N Penryn Rd, Manheim, PA 17545

***NOTE: To receive or unsubscribe to the quarterly newsletter, write to secretary@penntwplanco.org with the subject "Newsletter".
Penn Township privacy policy: We collect no personally identifiable information unless you voluntarily supply it.

Winter Holiday Safety

 Blow out lit candles when you leave the room and before going to bed. More than a third of home decoration fires are started by candles.

 Turn off all light strings and decorations before leaving home or going to bed. 42% of decoration fires happen because decorations are placed too close to a heat source.

BOARD OF SUPERVISORS

Chairperson-Ben Bruckhart
Vice Chairperson-Jill Groff
Treasurer-Ronald Krause
Supervisor-Richard Landis
Supervisor-Gary Stevens
Secretary-Mark Hiester

PLANNING COMMISSION

Chairperson-Linda Brown
Vice Chairperson-Stephen Engle

Secretary-Fred Hammond
Member-Mark Compton
Member-Leroy Stoltzfus
Alternate-Cullen Ketcham

ZONING HEARING BOARD

Chairperson-Gerald Wolfe
Vice Chairperson-Dale Rohrer
Member-Steven Bushey
Member-Aaron Kopp
Member-Bill Postel
Alternate-Vacant

BOARD OF AUDITORS

Chairperson-Vacant
Secretary-Vacant
Member-Vacant

NORTHWESTERN LANCASTER COUNTY AUTHORITY

Chairperson-Herbert Mattern Jr.
Vice Chairperson-Barb Horst
Treasurer-Robert Kurtz
Member-Phil Donmoyer
Member-Cullen Ketcham

NORTHERN LANCASTER COUNTY REGIONAL POLICE

Chief-David Steffen

TOWNSHIP STAFF

Manager-Mark Hiester
Planner-Jennifer Brady
Zoning Officer-Matt Reeser
Finance-Connie Weidle
Receptionist-Barbara Grable
Public Works Director-Daryl Lefever

Foreman-Neil Fittery
Maintenance Worker-Keith
Iehle
Maintenance Worker-Shannon
Martin

Maintenance Worker-Dave
Newcomer

SEWAGE ENFORCEMENT OFFICER

Len Spencer, III, SEO