



#### BOARD OF SUPERVISORS

Chairperson - Ben Bruckhart  
 Vice Chairperson - Jill Groff  
 Treasurer - Ronald Krause  
 Supervisor - Dick Shellenberger  
 Supervisor - Richard Landis  
 Secretary (non-voting) - Mark Hiester

#### PLANNING COMMISSION

Chairperson - Joseph Lyons  
 Vice Chairperson - Richard Whitehouse  
 Secretary - Linda Brown  
 Member - Mark Compton  
 Member - Stephen Engle  
 Alternate - Leroy Stoltzfus

#### ZONING HEARING BOARD

Chairperson - Gerald Wolfe  
 Vice Chairperson - Dale Rohrer  
 Member - Steven Bushey  
 Member - Aaron Kopp  
 Member - Justin Wolgemuth  
 Alternate - Fred Hammond

#### BOARD OF AUDITORS

Chairperson - J. Meredith Miller  
 Secretary - Amy Minnich  
 Member - Nancy Auker

#### NORTHWESTERN LANCASTER COUNTY AUTHORITY

Chairperson - David Stewart  
 Vice Chairperson - Herbert Mattern  
 Secretary - Jeffrey Sweater  
 Treasurer - Robert Kurtz  
 Member—Phil Donmoyer

#### NORTHERN LANCASTER COUNTY REGIONAL POLICE

Chief - David Steffen

#### TOWNSHIP STAFF

Manager - Mark Hiester  
 Planner - Sharyn Young  
 Zoning Officer - Matt Reeser  
 Finance - Connie Weidle  
 Receptionist - Barbara Grable  
 Public Works Director - Daryl Lefever  
 Foreman - Neil Fittery  
 Maintenance Worker - Keith Lehle  
 Maintenance Worker - Shannon Martin  
 Maintenance Worker - Dave Newcomer

### Spotted Lanternfly Threatens Agricultural Commodities



The spotted lanternfly (seen here) is an inch-long black, red and white spotted invasive insect that “threatens to destroy \$18 billion worth of agricultural commodities here like apples, grapes and hardwoods, inflicting a devastating impact on

the livelihoods of our producers and businesses” said Russel Redding, Pennsylvania Agriculture Secretary.

Lancaster County is in the quarantine zone. People in (more pg 2)

### TOWNSHIP OFFICE FALL CLOSINGS

Dec. 25 & 26: Christmas  
 Jan. 1: New Year's Day  
 Jan. 15: Martin Luther King Day  
 Feb. 19: President's Day

### Penn Township Offices

Hours: Mon-Thurs...7am-5:30pm  
 Municipal Office..... 665-4508  
 Water & Sewer Billing ... 665-4508  
 Building/Zoning ..... 665-4508  
 Sewage Enforcement ..... 989-8439  
 Police Department..... 733-0965

### IN THIS EDITION

2018 Budget Update.....	7
Active Development Plans.....	8
Libre's Law .....	3
Lititz RecCenter .....	6
Manheim Community Library .....	7
Penryn Fire Company .....	5
Permits .....	7
Recycle CFL Lightbulbs.....	7
Scam Alert.....	4
Spotted Lanternfly.....	1 & 2
Traffic Signals .....	3
Winter Safety Tips .....	5



## Spotted Lanternfly (cont'd)

quarantined counties are asked to destroy spotted lanternfly egg masses they see on trees, vehicles or other surfaces by scraping them off, double bagging them and putting them in the garbage or by placing them in alcohol or hand sanitizer. Eggs are laid in the fall and the masses initially are waxy-looking, grey-brown blobs, and later look like dried mud.

Anyone who finds insects or egg masses outside the quarantined counties is asked to notify authorities by emailing [bedbug@pa.gov](mailto:bedbug@pa.gov) or by calling the Invasive Species Report Line at 1-866-253-7189. Please have details ready.

“The more this pest spreads through Pennsylvania, the more susceptible we are to trade restrictions,” Redding said. “That is something we simply cannot afford.”



## PennState Extension



### How You Can Comply with the Spotted Lanternfly Quarantine Regulations

There is a new invasive insect in southeastern Pennsylvania, *Lycorma delicatula*, commonly known as the spotted lanternfly (SLF). This insect has the potential to be harmful to grapes, stone fruit, and trees. To try to limit the spread of SLF, the Pennsylvania Department of Agriculture (PDA) has established a quarantine order in municipalities where SLF already exists. All residents and businesses must comply with the regulations.

The PDA has the authority to fine anyone who willfully violates the quarantine order.

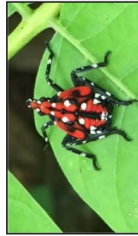
#### Here are some tips to help you avoid spreading SLF and be in compliance with the regulations.

1. Learn about which municipalities are included in the quarantine order. The area of the quarantine will continue to change as new discoveries are made. As you move into and out of the quarantined area, you must make sure that you are not transporting any living life stages of the SLF to new areas which are not yet included in the quarantine. If you believe you have discovered SLF in any area outside of the current quarantined area, report your discovery to the PDA by sending a picture to [badbug@pa.gov](mailto:badbug@pa.gov) or calling 1-866-253-7189. The most recent quarantine map can always be found in the publications list at this site: <http://www.agriculture.pa.gov/protect-plantindustry/spotted-lanternfly/Pages/default.aspx>

2. Learn about what SLF looks like in every stage of its development throughout the year.



The young nymphs are black with white spots and can be present from May until October.



The older nymphs are black and red with white spots and can be present from June until October.



The adults (shown at rest) can be present from July until late December. The adults are 1 to 1 1/4 inches long.



An adult showing the red underwings when disturbed (photo credit: Nancy Bosold)



The egg masses can be on trees, rocks, or any other solid object and can be present from September through May.



The empty remains of the eggs that have hatched can be found at any time of the year.

3. You should avoid parking or storing things under trees in infested areas. The female SLF often lays eggs on

(continued)

To see additional pictures of SLF go to:

<http://extension.psu.edu/pests/spotted-lanternfly/photos/spotted-lanternfly-what-to-look-for>

objects that are under the trees she is feeding on. You should try to change your habits about where you park. Park vehicles in open fields, away from tree lines, or in a closed garage if possible. You should not store things that you might need to move to outside of the quarantined area under infested trees. These things include firewood, tools, construction supplies, equipment, or any other solid object.

4. Inspect all items that you need to move from within the quarantined area to areas outside the quarantined area. You should remove and destroy any SLF that you find before you move the item. Also check all vehicles, trailers, campers and equipment including around windshield wipers, grills, wheel wells, and truck beds. Inspect plant material, woody debris, lawn furniture, construction supplies, tools, and all solid objects. Remove SLF manually or use a pressure washer. You can destroy mobile stages of SLF mechanically by crushing them. Destroy eggs by smashing them or scraping them into a container of rubbing alcohol.

5. All businesses should consider entering into a compliance agreement with the PDA. A compliance agreement states that you know how to follow the rules of the quarantine order and agree to do all you can to ensure that the items you transport are not carrying SLF. The PDA is maintaining a list of companies who have set up compliance agreements at <http://www.agriculture.pa.gov/protect-plantindustry/spotted-lanternfly/Pages/default.aspx> and people check this list to find companies who are in compliance. You will also receive documentation to share with your customers to show that you have a compliance agreement with the PDA. Contact your regional PDA office for more information: <http://www.agriculture.pa.gov/regional-offices/Pages/default.aspx>

6. Use the checklist for residents if you need to move items that are not included in a compliance agreement through a business. This checklist is a legal document to show that you have inspected the item, removed and destroyed any living life stages of SLF and you are in compliance. You can print the checklist, fill it out, sign it and take it with you when you move the item(s).

The checklist is available at this link: <http://www.agriculture.pa.gov/Protect/PlantIndustry/spotted-lanternfly/Documents/SLF%20Checklist%201-1-2-2014.pdf>

7. If you sell plants, you should have them inspected by the PDA and receive a phytosanitary certificate. Pennsylvania law requires horticultural businesses that produce and/or sell plants to have either a Nursery/Greenhouse License or a Nursery Dealer's License. When you have a license plant inspectors will check your plants and if they are found to be free of pests, you will receive a phytosanitary certificate as proof of this inspection. <http://www.agriculture.pa.gov/Protect/PlantIndustry/Phytosanitary/Pages/default.aspx>

8. If you sell and/or produce much you must use specific practices to ensure it does not harbor SLF. The specific practices are outlined in the fact sheet at this link: <http://www.agriculture.pa.gov/Protect/PlantIndustry/spotted-lanternfly/Documents/The%20Spotted%20Lanternfly%20and%20Handling%20and%20Waste.pdf>

You should note that the SLF regulations do not apply to grass clippings or autumn leaf collection. We believe that the SLF does not lay eggs on these light weight objects. Clippings and leaves may be moved from the quarantine area if necessary, as long as the truck and/or trailer you are hauling them with has been checked.

The regulations of the spotted lanternfly quarantine order are in place to prevent the SLF from being spread by people. This pest is not just a concern to agricultural and horticultural professionals, it is a community concern. To protect the agriculture industry, we need everyone to be aware of the best practices to avoid spreading SLF and use these practices in their daily activities.

You can see the official quarantine order - a summary in plain language and find more information at this link:

<http://www.agriculture.pa.gov/protect-plantindustry/spotted-lanternfly/Pages/default.aspx>

Additional information is at this link:

<http://extension.psu.edu/pests/spotted-lanternfly>

Prepared by: Emelie Swackhamer, Horticulture Extension Educator, Montgomery County, June, 2017.

Penn State College of Agricultural Sciences research and extension programs are funded in part by Pennsylvania counties, the Commonwealth of Pennsylvania, and the U.S. Department of Agriculture. Where trade names appear, no discrimination is intended, and no endorsement by Penn State Extension is implied.

This publication is available in alternative media on request.

[extension.psu.edu](http://extension.psu.edu)

## **Libre's Law**

Earlier this year, the governor signed a package of bills, which includes Libre's Law, Act 10. Here are several key measures spelled out in the new law, which was collected under the umbrella of House Bill 1238.

### **Defining Animal abuse**

Animal abuse is defined by grades of severity, from neglect at the low end of the scale to aggravated cruelty, when someone tortures an animal or causes serious bodily injury or death to an animal through neglect or cruelty.

### **Raising penalties**

Penalties for animal neglect range from a summary offence, 90 days in jail and/or a \$300 fine, or misdemeanor of the third degree, up to 1 year in jail and/or \$2000 fine, if neglect causes bodily injury or places the animal at imminent risk.

Penalties for animal cruelty is a misdemeanor of the second degree, up to 2 years in jail and/or a \$5,000 fine.

Penalties for aggravated cruelty is a felony of the third degree, up to seven years in jail and/or a \$15,000 fine.

### **Mandatory forfeiture**

If someone is convicted of a felony violation for abusing an animal, the animals that were victims of the abuse must be forfeited to an animal shelter and allows for forfeiture upon other convictions.

### **Protections for horses**

Penalties for crimes against dogs and cats apply to horses as well.

### **Improved tethering conditions for outside dogs**

Dogs tethered outside must be provided with basic needs, including water and shade. Dogs may not spend more than nine hours tethered in a 24-hour period. The maximum time limit is reduced to 30 minutes when the temperature exceeds 90 degrees or is below 32 degrees.

A dog must be secured by an appropriate collar with no tow or log chain or a choke, pinch, prong, or chain collar, and there may not be "excessive waste" in the tethered area. Tether must be the longer of three times the length of the dog or 10 feet.

There must also be no open sores or wounds on the dog's body.

### **Civil immunity**

Law shields veterinarians, veterinary technicians and assistants who report animal cruelty in good faith from lawsuits.

For more information on this law, visit [www.governor.pa.gov/govenor-wolf-signs-animal-cruelty-prevention-bill/](http://www.governor.pa.gov/govenor-wolf-signs-animal-cruelty-prevention-bill/).

## **Fruitville Pike, Temperance Hill Rd, and Holly Tree Rd Traffic Signals**

As the Township obtains the last approvals from owners of abutting property to these two nearby intersections, it is possible that construction on the long-awaited traffic signal project may begin in the Spring of 2018. Moreover, road construction on the 'S-curve' segment of Holly Tree Road and the remaining segment to Fruitville Pike may also occur in 2018, in coordination with the traffic signal work. Capped public sewer facilities are to first be installed in each project. No connections will be required at that time.







# PENNSYLVANIA STATE POLICE COMMUNITY AWARENESS BULLETIN

CAB 005-17

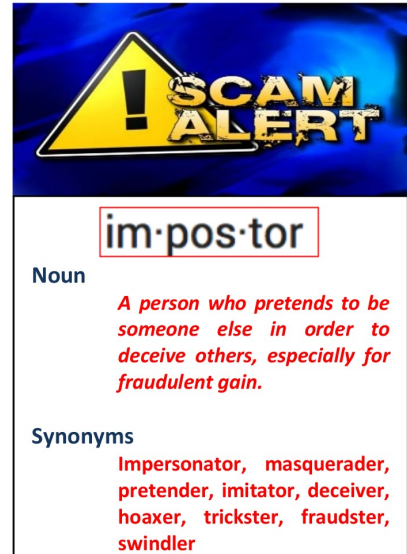
October 3, 2017

## TRANSIENT CRIMINAL SCAM – DIVERSION THEFTS/IMPOSTER FRAUDS

Throughout the year, the Commonwealth of Pennsylvania plays host to transient criminals who travel great distances in search of victims for their various money-making scams. In many cases, their targets are the elderly. The greatest defense against these “scam” artists is to share some basic crime prevention tips.

One of the more recent prevalent scams being perpetrated by transient criminals in Pennsylvania is Diversion Thefts/Imposter Frauds. In this scam, criminals approach and distract a homeowner, luring them toward a particular room of the house with ploys such as feigning illness, asking for a drink of water, saying that they are looking for a lost pet, etc. They may also pose as a repairman from the local power company or water department in an effort to gain access to the victim’s house or lure the victim out of the house. They present an identification badge, or may be wearing what appears to be a work uniform, and convince the victim that they need to test the water pressure, electricity, or determine where the property line is. The scammers then advise the victim that company regulations do not allow them to be on the property or in the house unaccompanied. Their purpose is to distract the victim while unseen accomplices enter the residence and steal valuables, such as jewelry and cash. In some

instances, the suspects communicate with hand-held radios or cellular telephones while committing these offenses. Some other frequently used ploys include claims that the perpetrator works for a tree pruning service, driveway paving service, or fence installation company.



### Prevention Tips:

- Always lock your doors when doing yard work, getting mail, or anytime you go outside - both front and back doors.
- Be careful with whom you let in your home. Never allow strangers inside your home, even if they appear to be in distress or with a young child.
- Check with your utility company by telephone if an employee wants to enter your home, or wants you to come outside with them. If you do not see any identification or company credentials, ask for it; however, keep in mind some of these criminals have become skillful at making their own identification cards. Do not hesitate to check each individual’s identification and verify information with their respective company.
- Write down the license plate number of any vehicles that suspicious individuals may be operating. Try to obtain a good physical description of anyone who comes to your door.
- **CALL THE POLICE TO REPORT THE INCIDENT IMMEDIATELY!** Never be too embarrassed to report that you may have been victimized or swindled.



## Penryn Fire Company Saves Lives

Oct. 11, 2017 (GLOBE NEWSWIRE) -- Today, ADT, a leading provider of security and automation solutions for homes and businesses, celebrated one of its LifeSaver events in Manheim, PA where a family was reunited with rescuers who helped save them from carbon monoxide.

The 'silent killer' scare happened August 25 the homeowner was hours away from home. In the home was her mother, her young daughter, a grandchild and several pets.

"ADT called on my cell and said there was carbon monoxide in my house and that the fire department had already been dispatched," stated the homeowner. "They advised me to tell my family to get out until firefighters arrived." All were safely evacuated.

Using a portable air monitor upon arrival, first responders from the Penryn Fire Company pinpointed the source of the carbon monoxide to a faulty indoor pool heater.

"There were readings of carbon monoxide in the home that, over time, could have threatened the lives of everyone inside," said Firefighter Zach Petticoffer. "I immediately shut off the gas and we aired out the home to make it safe."

"If we did not have ADT, we could've been slowly poisoned by the leak," said Wood. "I'm grateful to ADT and first responders for helping save our lives."

ADT awarded \$5,000 to the Penryn Fire Company which will use a portion of the funds to buy another air monitor and equipment for a new rescue vehicle joining the fleet.

According to the CDC, 500 Americans die every year from carbon monoxide and up to 50,000 are poisoned. It's estimated only 30% of American homes have C/O detectors.



l-r: Chris Massaglia ( ADT Area General Manager ) Zach Petticoffer ( who actually was there on the carbon monoxide call) Sherri Parson Doug Bollinger Sam Kochel Jon Marvin (ADT )

## WINTER STORM SAFETY & TIPS

The Penn Township Public Works Department understands that when the snow flies, life on the roads can be a trying time. We try hard to do the best and quickest job possible to make the roads safe and clear of snow and ice. Cindering usually starts right after the snow begins to fall, with plowing starting around 3" of accumulation. Cindering and plowing routes are set up to clear the more heavily traveled roads first, then secondary roads and development streets. All roads are usually plowed over twice. We make an effort to plow through all of the streets and roads once to get everything at least passable and then the second time to get the snow to the edge of the road or curb. Penn Township is committed to providing excellent snow removal service.

- ◆ Stay back at least 100 ft, when following plow trucks or equipment
- ◆ Turn on headlights
- ◆ For your safety, DO NOT PASS A SNOW PLOW when it is plowing
- ◆ 3 ft minimum clear zone around fire hydrants within 24 hrs
- ◆ Snow and ice 3ft wide must be cleared within 24 hrs
- ◆ Snow and ice must not be deposited next to a fire hydrant, on a sidewalk or loading/unloading area
- ◆ Damage to mailboxes, nets, poles or other obstructions within the right-of-way are the property owner's responsibility



# Lititz recCenter

## Open House, Membership Specials & Free Programs Open to the Community

### LRC/RECROC MEMBERSHIP SPECIALS

COLLEGE BREAK PASS: VALID NOV 18-JAN 31, FOR STUDENTS 18-22

\$65 FOR LRC OR RECROC, \$95 FOR BOTH FACILITIES

Waive the \$50 Joiner's Fee for any new 1 year membership purchase in January!



### Membership Special

Waive the Joiner's Fee on  
ANY new membership!

Located at 201 Rock Lititz  
Boulevard, Suite 10, Lititz, PA  
[www.lititzrecroc.com](http://www.lititzrecroc.com)

### Holiday Sizzler - Dec. 23 & 30 Try It's (goodies & snacks provided)

Body Vive: 8am~~~Body Combat: 8:40am~~~Body Pump: 9:20am~~~Body Flow 10am

### New Year's Resolution Fitness Freebies

Monday, Jan 1: Body Pump: 9:15-10:15am

Tuesday, Jan 2: Kickboxing Club: 6-7pm, P90X: 7-8pm

Family Goshi Shun Karate: 7-8pm

Thursday, Jan 4: OULA!: 6-7pm, POUND: 7-8pm

Saturday, Jan 6: CoreFit: 9-9:30am, 9:30-10am, Kid's Ballet1: 9:30-10:15am,

Kid's Ballet 2: 10:15-11am, Kid's Dance Party: 11-11:45am

### Les Mills Launch Party: January 14 (snacks provided)

Body Vive: 8am~~~Body Combat: 8am

Body Pump: 9am~~~Body Flow 10am

### Zumba Party Night Out: Jan 21 & Feb 9

An energizing Zumba Party every 2nd Friday: 6-7pm

### February Heart Month Special

Free group and spin classes every Friday!

### recROC Fitness Freebies

Tuesday, Jan 2: Stick Mobility: 6:30-7:15pm

Wednesday, Jan 3: Scramblers: 5:30-6:15pm

Thursday, Jan 4: Co-ed Bouldering: 6:30-7:30pm

Saturday, Jan 6: Parkour Explore for Kids Ages 8-13: 11:30am-12noon



**LITITZ**  
**recKids**  
CHILD CARE

**We're Fun!  
We're Active!**  
32 Years of Experience  
**We Love Kids!**

**Special Day Camp**  
Open to all School Districts for  
Kindergarten - 6th Grade. Available during  
non-major holidays, inclement weather  
days and Warwick in-service days.

**Before & After School Care**  
Provided at Warwick Elementary Schools and the Lititz recCenter

**Preschool Academy**  
Register your child today!  
Located at the  
Lititz recCenter.  
Curriculum  
based programs  
and New! Weekly swim  
lessons, games in the gym  
and funZone activities.

Email: [reckids@lititzrec.com](mailto:reckids@lititzrec.com)  
[www.lititzreckids.com](http://www.lititzreckids.com)

### Upcoming Programs at the LrC

Gingerbread House Making -  
Dec 19

Men's Adult Basketball  
Leagues

Adult Roller Hockey League

Massage & Facials

Bus Trips - Sands  
Bethlehem Casino & Philly

Flower Show

Swim Lessons Offered Year  
Round

Approximately 100 fitness  
classes offered

**Preschool, Youth,  
Adult Programs, &  
Many, Many More!!**

Lititz recROC

BUY ONE GET ONE FREE

### recROC Guest Pass for Penn Twp Residents

\*present this coupon with the purchase of a recROC guest pass and receive an additional guest pass free



Date: \_\_\_\_\_

Name: \_\_\_\_\_

Phone Number: \_\_\_\_\_

E-mail: \_\_\_\_\_

Authorized by: Megan Vulatic

Expires: March 31, 2018

recROC Guest Pass is valued at \$17  
not redeemable for cash



Lititz recRoc  
201 Rock Lititz Blv  
Suite 10  
Lititz, PA 17543  
717-874-3281  
[www.lititzrecroc.com](http://www.lititzrecroc.com)



[www.lititzrec.com](http://www.lititzrec.com)

Ph. 717-626-5096



## Storytime!

It's time for Storytime! Storytime will begin the week of January 24<sup>th</sup> and will continue for 10 weeks through the week of March 27<sup>th</sup>. The Manheim Community Library offers three storytimes a week. Preschool Time is for your 3-5 year-old's literacy preparedness. Your child will enjoy stories, games, songs and activities that will help build a foundation for his or her early learning. Join us for Preschool Time on Tuesday 10 AM at the Penn Township Building or Wednesday 10 AM at the Library.



Toddler Time with Stay and Play is a place for your 1-2 year-old to engage with other toddlers, develop crucial fine and gross motor skills, sing songs and listen to fun stories. Toddlers and a caregiver are invited to a short lap-sit and then an indoor playtime. Come learn through play with us at the Library, Thursdays at 9:30 AM.

Sign-up is required for all the programs. You may sign up by calling 665-6700, or registering online [www.ManheimLibrary.org](http://www.ManheimLibrary.org).

**Programs & Book Clubs! Check our website [manheimlibrary.org](http://manheimlibrary.org) for more information**



## Mark your calendars now

### **Friends of the Manheim Community Library Book Sale**

To be held in early November in the Manheim Community Library basement. Visit [manheimlibrary.org](http://manheimlibrary.org) for details!

## Permits

Many projects that Residents routinely carry out in and around their homes require Zoning and Building permits by Penn Township Ordinance and/or the Pennsylvania Uniform Construction Code.

Have you done work to your home or property that required a permit and inspections? Are you aware that the permit must be "closed out" prior to the structure being legally used and enjoyed?

Please know, that if you did complete a project that required you to apply for a permit in the past, and it wasn't properly closed out, you may experience issues in the future when you decide to sell your home or an emergency arises. The ever-so-important document that proves all regulations and rules were properly followed, is called a Certificate of Use and Occupancy when a UCC Building Permit is required, or a Certificate of Compliance when a Zoning Permit is required. Both are required documents that should be kept on hand in a safe place. If you have had Zoning or Building Permits issued and you haven't received your certificate, please contact Zoning Officer, Matt Reeser at 717-665-4508 or by email at [zoning@penntwplanco.org](mailto:zoning@penntwplanco.org).

## Recycle CFL Lightbulbs

EPA recommends that consumers take advantage of available local options for recycling CFLs, fluorescent bulbs and other bulbs that contain mercury, and all other household hazardous wastes, rather than disposing of them in regular household trash.



Recycling CFLs and other fluorescent bulbs prevents the release of mercury into the environment and allows others to reuse other parts that make up the lights. Virtually all components of the bulb can be recycled.

Recycle your old compact fluorescent light (CFL) bulbs at the township office.

Note: We do NOT accept LED, incandescent or broken bulbs.

## 2018 Budget Update

The county is performing a reassessment of real property values which will probably reduce the township's real estate tax rate from 1.8 mills. The exact amount of change will not be known until after we get the final information from the county, by November 15, 2017. We usually get the needed information from the county by October 1. With the reassessment, appeals from property owners are being processed by the County – which is taking more time. Meanwhile Township officials have drafted a 2018 budget, assuming all appeals will be approved, that is balanced. A proposed 2018 budget is expected to be approved by the Board of Supervisors in November. A twenty day public review period follows and then the final 2018 budget will be approved in December.



**PENN  
TOWNSHIP**  
LANCASTER COUNTY, PA

97 N Penryn Rd, Manheim, PA 17545

\*\*\*NOTE: Want to receive the quarterly newsletter? Send your e-mail address to [secretary@penntwplanco.org](mailto:secretary@penntwplanco.org) with the subject "Newsletter"

## Active Development Plans

Name	Year	Location	Project Type	Status
Manheim Commons	2018	Lancaster & Bucknoll Roads	186 Apartments & 24,000 SF Commercial	Land development plan submittal anticipated late 2017/early 2018
Holly Tree Farms Lot 2	2017	Holly Tree Road	12-Unit Apartment Building	Construction anticipated to start late 2017
Penn Towne Center Ph 3	2017	1223 Lancaster Rd	35,500 SF Multi-Tenant Commercial Building	Building construction substantially complete, spaces available for lease
Jay Reiff Farm	2017	Newport Road	New Poultry Barns	Under construction
Walnut Run Farms	2016	Elm Road	Dairy Farm Expansion	Conditionally approved, construction anticipated to start late 2017
Verizon Wireless	2016	East Meadow Rd	Cellular Tower	Conditionally approved, construction anticipated to start 2018
Kreider Farms	2014	Woodlot Road	New Poultry Barns	Under construction
Kreider Farms	2014	Indian Village Rd	New Poultry Barns	Under construction
Stable Hollow Construction	2013	Mountain Rd	8,400 SF Addition to Contractor Building	Under construction
Sun Hill Commons	2012	W Sun Hill Rd	43 Single Family Dwellings	Under construction
Cedar Hollow	2004	W Sun Hill Rd	75 Single Family Dwellings	Under construction
Baron's Ridge	2004	White Oak Rd	69 Single Family Dwellings	Under construction
Sweetbriar Creek	2004	Bucknoll Road	200 Single Family Dwellings	Under construction