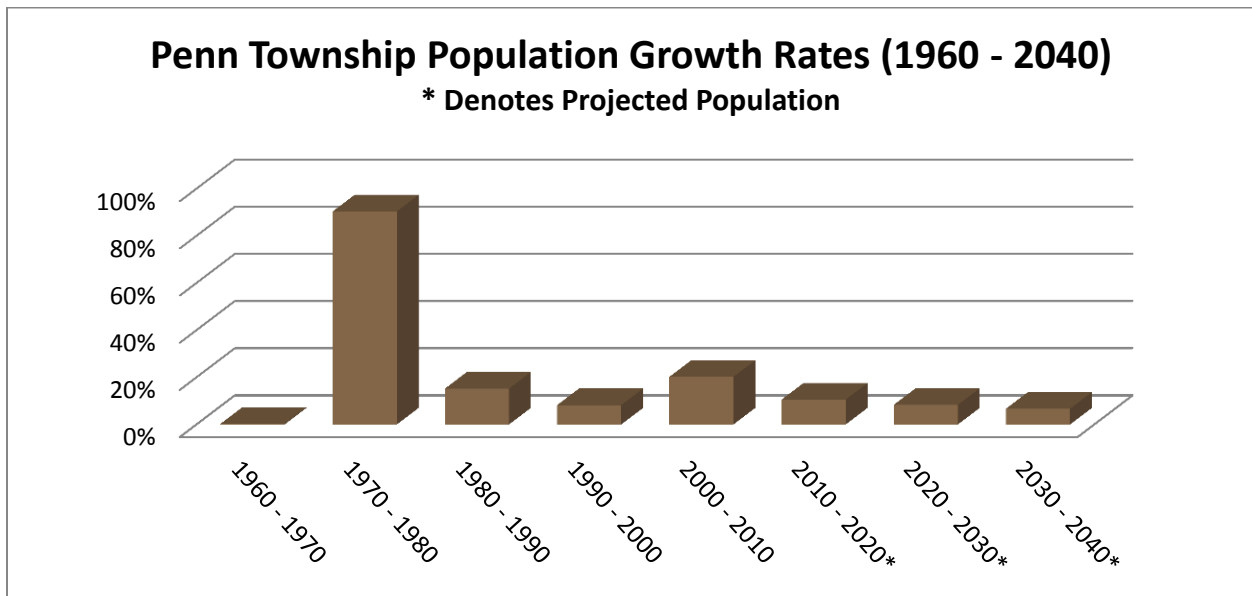
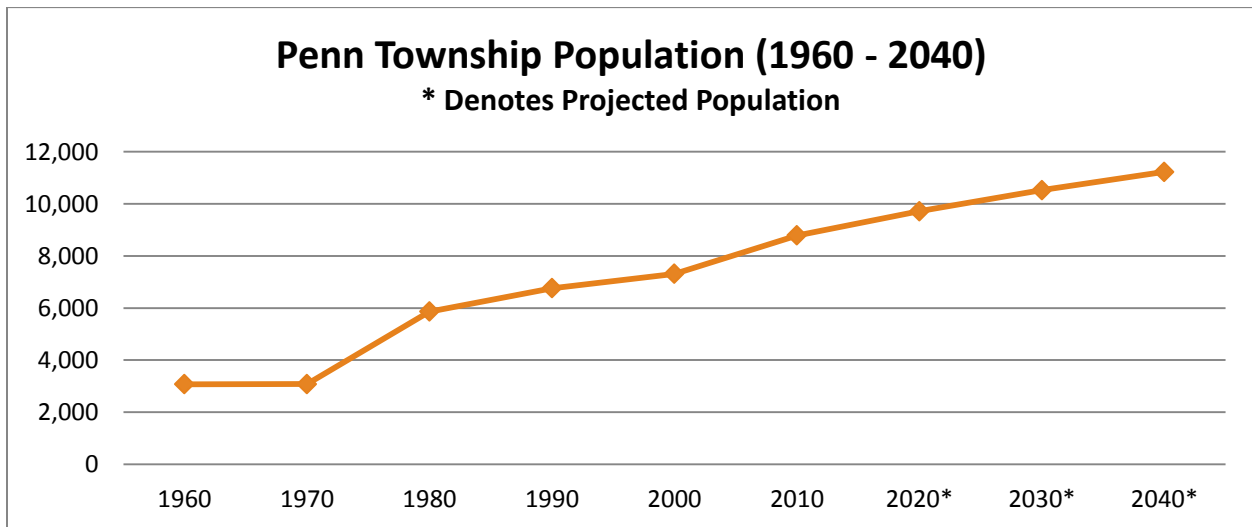


Penn Township Demographics Summary

2010 U.S. Census Data

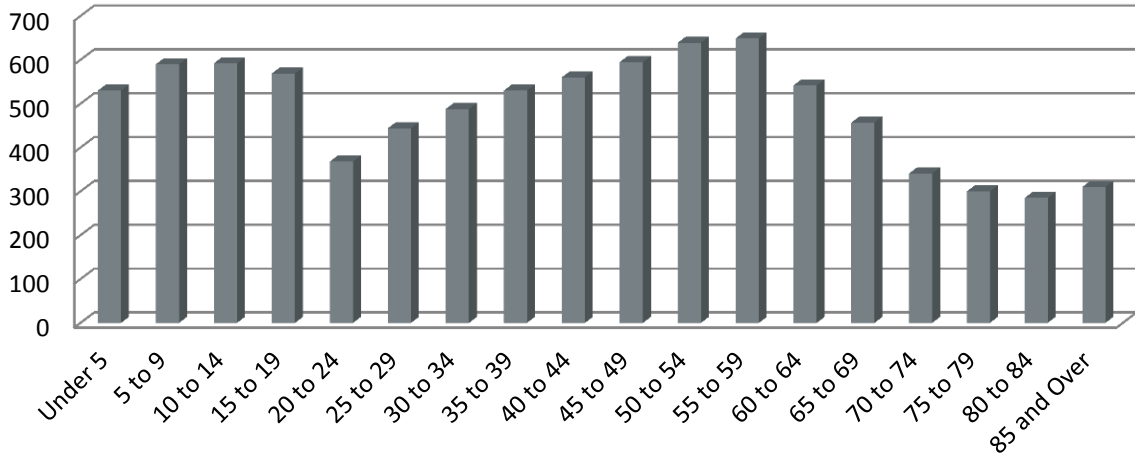
Penn Township has experienced a 186% increase in population between the 1960 and 2010 Censuses. While growing from 3,072 to 8,789 residents during the past five decades, the 1970s marked a population boom in which the population nearly doubled. The movement of growing families from traditional settlements like the city and boroughs – as well as farms – into subdivisions throughout townships like Penn was beginning to take hold at that time in Lancaster County.

Growth has been steady since the 1970s, but is anticipated to continue at rates near 10% per decade¹. Although local family sizes are smaller than in previous generations, the United States' population as a whole is expanding. This trend is reflected in Pennsylvania and Lancaster County, with in-migration impacts influencing the Township.



¹ Population projection information provided by the Lancaster County Planning Commission.

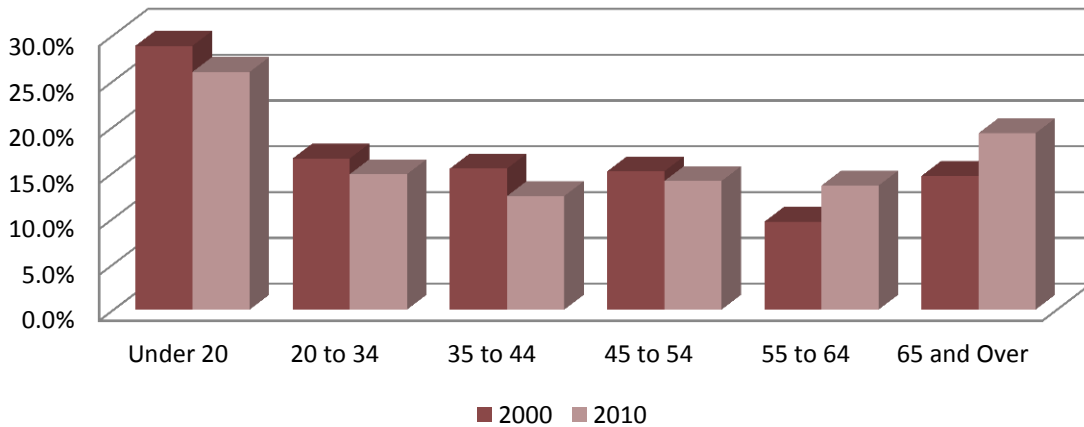
2010 Penn Township Population, by 5-year Age Group



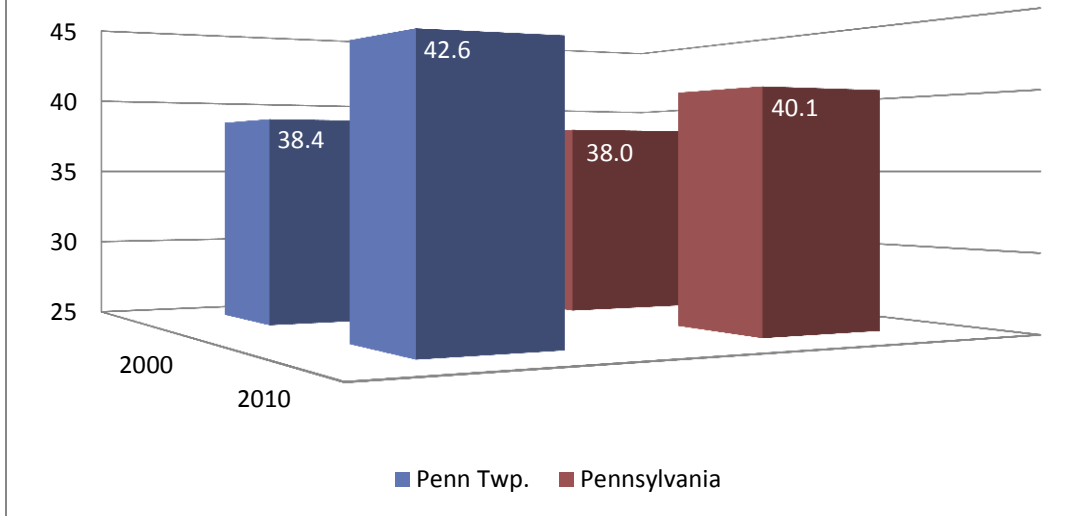
After separating the 8,789 people counted in 2010 into five-year age groups, one can see that the largest of these brackets are made up of people in their 50s. In the above chart, noticeable dips are visible in groups of people in their 20s and those older than 65. What is interesting to note is that despite the gap in the 20-29 demographic, over 25% of Penn Township is comprised of those younger than 20 years of age.

Looking at the population composition from the 2000 and 2010 Censuses, the “55 to 64” and “65 and Over” groups have increased while the others have decreased in proportion. Reflecting the nationwide phenomenon locally – affected primarily by the Baby Boom generation reaching these age ranges – the Pleasant View Retirement Community expanded and the 55+ Brookshire development was built, effectively growing the capacity for an aging population.

Penn Township Population Composition Comparison, by Age Group (2000 - 2010)

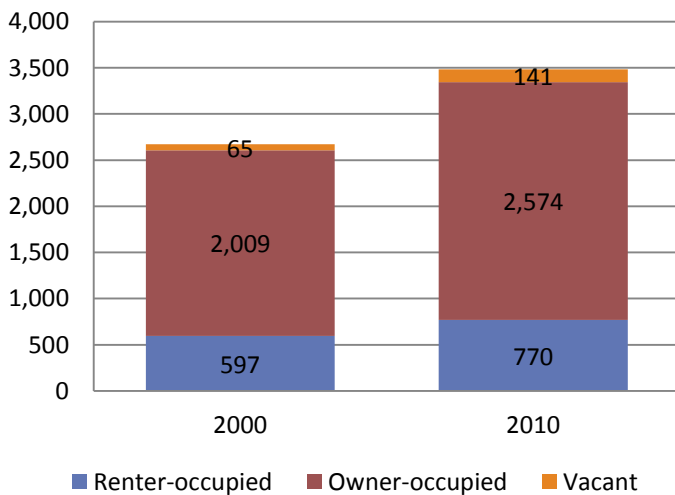


Median Resident Age Comparison (2000 - 2010) Penn Township vs. Pennsylvania

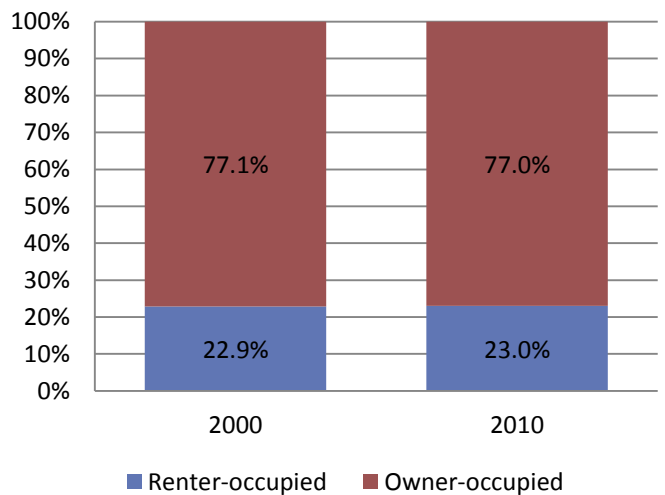


A net increase of 814 housing units in the 2000s has helped accommodate a growing population. An interesting aspect is the general composition of owner- and renter-occupied units in Penn Township that remained essentially the same in 2000 and 2010. As expected during the course of the economic climate of the late 2000s, vacant units increased in the last decade – although it is unclear whether this has undergone a slight correction since the 2010 Census.

Penn Township Housing Units (2000 - 2010)



Penn Township Housing Composition (2000 - 2010)



In addition to how many residents and homes are in the Township, another way to look at the local people is *where* people are living. Census blocks (the smallest-sized geography that the U.S. Census accumulates data for) allow us to see population density as a function of people per square mile, with the darker areas representing relatively more-populated areas.

